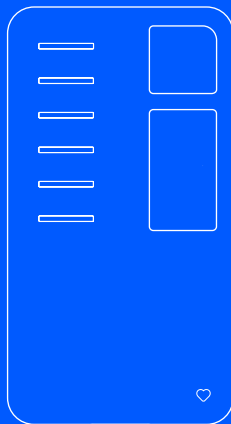


easee



EN Installer and User guide

# Equalizer Amp

# Introduction

The information in this leaflet applies to Easee Equalizer Amp , unless specified otherwise.

Read the Important product information guide in the product packaging or at [easee.com/manuals](https://easee.com/manuals) before using the product.

## WARNINGS AND CAUTIONS

A Warning indicates a condition, hazard or unsafe practice that can result in serious personal injury or death.

A Caution indicates a condition, hazard or unsafe practice that can result in minor personal injury or damage to the product.

## WARNING

This product shall only be installed, repaired or serviced by an authorised electrician. All applicable local, regional and national regulations for electrical installations must be respected.

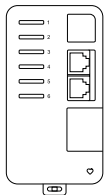
## **Optimal performance**

The Equalizer Amp together with the Easee Equalizer makes it possible to charge smarter, safer and faster without the need of a smart meter, if the installation is scaled accordingly.

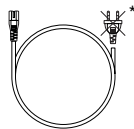
## Technical specifications

<b>General</b>	
Dimensions Product	95 x 51 x 30 mm (H x W x D)
Operating temperature	-20 °C to +50 °C
Weight	105 g
Supply	85-264 V AC
Installation system	TT, IT or TN
Phases	1- or 3-phase
<b>Current sensors</b>	
Type	CT clamps
Operation range	0 – 100 A
Conductor diameter	max. 16 mm
Cable length	1 m
<b>Protection</b>	
Degree of protection	IP30
Insulation class	II
Overvoltage category	OVC II
<b>Connectivity</b>	
2 x RJ12 connectors	
6 x sensor slots	
1 x 12 pin expansion port	

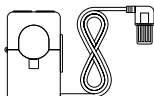
## Product overview



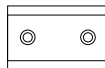
Equalizer Amp



Power cable



Current sensors x 3



DIN bracket



Expansion connector

\*Plug not included for the power cable.

# Installation instructions

## WARNING

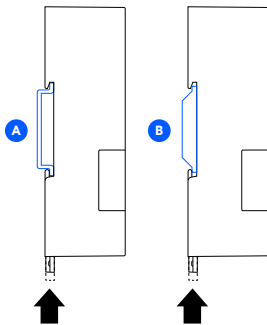
- This product shall only be installed, repaired or serviced by an authorised electrician. All applicable local, regional and national regulations for electrical installations must be respected.
- Turn off the power before you begin the installation. Use extreme caution and follow instructions carefully.



Install the Installer App on your phone by visiting [easee.com/installer-app](https://easee.com/installer-app) or scanning the QR code.

## 1 Equalizer Amp Mounting

1. Mount the Equalizer Amp on the DIN rail (A) inside the fuse cabinet. If that's not possible, attach the included DIN bracket (B) to a surface and then mount the Equalizer Amp.



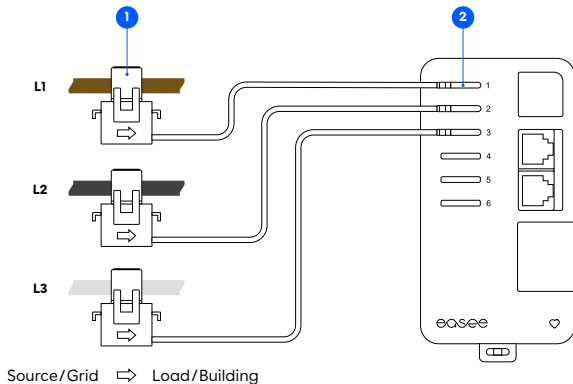
B

## 2 <sup>Current sensors</sup> Attaching

1. Attach current sensor(s) around each conductor either in front or behind the main fuse. The arrow on the sensor must point towards the load.

2. Plug the current sensors, L1, L2 and L3, into their respective terminals 1, 2 and 3.

**NOTE!** Depending on national standards, the colour of the cables can vary from illustration.

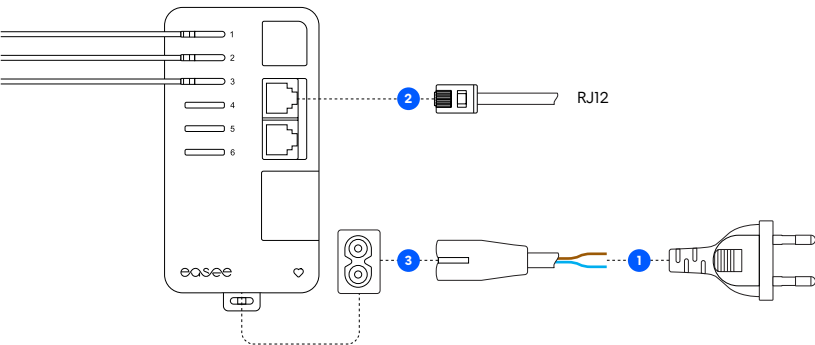


# 3 Equalizer Amp Connecting

1. Connect the included power cable to a suitable power source. A separate fuse with a maximum rating of 16 A is recommended.
2. Find the RJ12 cable in the Equalizer box and connect it to an RJ12 terminal on the Equalizer Amp. The bottom RJ12 terminal is for connecting multiple Equalizer Amps.

**CHECK LIST!** Before powering up the Equalizer Amp, make sure that:

- o The current direction is correct on the current sensors.
  - o The charging sites and the Equalizer Amp have the same phase sequence.
  - o The L1 current sensor is plugged into terminal 1, L2 sensor in terminal 2 and L3 sensor in terminal 3 on the Equalizer Amp.
3. Power up the Equalizer Amp. You should see a flashing ♥ at the bottom right corner of the device.

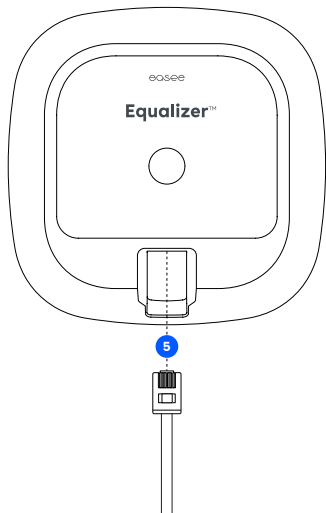
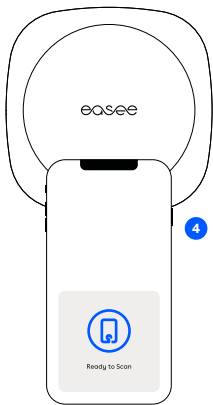


## 4 <sup>Equalizer</sup> Setting up

Use the Installer App to configure the Equalizer on a site with multiple circuits.

Before starting, make sure that the Equalizer and the master charger(s) are connected to the same WiFi network. Also make sure you have NFC enabled on your mobile phone.

1. Go to "Ongoing sites", or "Update existing site", and select your site.
2. Under "Site structure", select "Add Equalizer".
3. Enter the WiFi information (the same network the chargers are connected to).
4. Hold the mobile phone to the front of the Equalizer to transmit the WiFi details. The Equalizer cannot receive the information if it's powered on.
5. Connect the Equalizer to the Equalizer Amp with the RJ12 cable.





## Practical details

### LED colours meaning

White, fast flashing – Booting

White, breathing every 10s – Normal operation

Red / white, switching – No WiFi added

Red, flashing – No data from power meter

Red, breathing every 10s – Error

Purple, breathing every 10s – Offline operation

### Warranty

The device is free from material defects and is in accordance with laws and regulations for consumer protection in the country where the product is purchased. All correctly installed Easee hardware is covered by our 3 years\* limited warranty.

\*Some countries may have extended warranty.

### Maintenance

This product requires no maintenance.

If it needs to be repaired, please contact your Easee supplier.

### Returns and complaints

Contact your distributor or Easee Customer Support at [easee.support](https://www.easee.com/support) regarding the return and complaint of your product.

The information in this document is for information purposes only, is provided as is, and may be subject to change without notice. Easee ASA including its subsidiaries does not accept any liability for the correctness or completeness of the information and illustrations, and is not liable or responsible for your considerations, assessments, decisions or absence of such, or other use of the information in this document.

No part of this publication may be re-published, reproduced, transmitted or re-used in any other form, by any means or in any form, for your own or any third-party's use, unless otherwise agreed with Easee or its subsidiaries in writing. Any permitted use shall always be done in accordance with good practice and ensure that no harm may be caused to Easee or by misleading the consumer.

Easee and Easee products, product names, trademarks and slogans, whether registered or not, are Easee's intellectual property and may not be used without Easee's prior written permission. All other products and services mentioned may be trademarks or service marks of their respective owners.

September 2023 – Version 1.01  
© 2023 by Easee ASA. All rights reserved.



Easee ASA  
Vassbotnen 23  
4033 Stavanger, Norway

[www.easee.com](http://www.easee.com)